

# Register your device

Register your device to your **MyCAEN+** account and get access to our customer services, such as notification for new firmware or software upgrade, tracking service procedures or open a ticket for assistance. **MyCAEN+** accounts have a dedicated support service for their registered products. A set of basic information can be shared with the operator, speeding up the troubleshooting process and improving the efficiency of the support interactions.

**MyCAEN+** dashboard is designed to offer you a direct access to all our after sales services. Registration is totally free, to create an account go to <https://www.caen.it/become-mycaenplus-user> and fill the registration form with your data.



<https://www.caen.it/become-mycaenplus-user/>

# **Technical Information Manual**

Revision n.8  
24 March 2014

**MOD. A 1732 - A 1832**  
*HIGH VOLTAGE*  
*BOARDS*  
**MANUAL REV.8**

**NPO:**  
**00101/00:17XXx.MUTx/08**

CAEN will repair or replace any product within the guarantee period if the Guarantor declares that the product is defective due to workmanship or materials and has not been caused by mishandling, negligence on behalf of the User, accident or any abnormal conditions or operations.

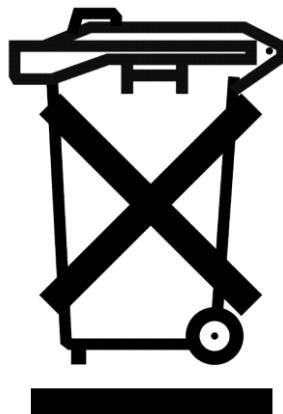
**CAEN declines all responsibility for damages or injuries caused by an improper use of the Modules due to negligence on behalf of the User. It is strongly recommended to read thoroughly the CAEN User's Manual before any kind of operation.**



*CAEN reserves the right to change partially or entirely the contents of this Manual at any time and without giving any notice.*

## **Disposal of the Product**

*The product must never be dumped in the Municipal Waste. Please check your local regulations for disposal of electronics products.*



**Made In Italy :** We stress the fact that all the boards are made in Italy because in this globalized world, where getting the lowest possible price for products sometimes translates into poor pay and working conditions for the people who make them, at least you know that who made your board was reasonably paid and worked in a safe environment. (this obviously applies only to the boards marked "made in Italy", we can not attest to the manufacturing process of "third party" boards).

---

# TABLE OF CONTENTS

<b>1. MOD. A 1732 - A 1832 HV BOARDS .....</b>	<b>5</b>
1.1 FUNCTIONAL DESCRIPTION.....	5
1.2 CHANNEL CHARACTERISTICS TABLE.....	6
1.3 FRONT PANEL .....	7
1.4 TECHNICAL SPECIFICATIONS .....	8
1.4.1 Packaging.....	8
1.4.2 External connections.....	8
1.4.3 Displays.....	8
1.4.4 Other components .....	9
<b>2. SAFETY INFORMATION AND INSTALLATION REQUIREMENTS .....</b>	<b>10</b>
2.1 GENERAL SAFETY INFORMATION .....	10
2.1.1 Injury Precautions.....	10
2.2 SAFETY TERMS AND SYMBOLS ON THE PRODUCT .....	11
2.3 INSTALLATION .....	11
<b>3. OPERATING MODES .....</b>	<b>12</b>
3.1 OUTPUT CONTROL AND MONITORING.....	12
3.2 OUTPUT ENABLE.....	13
3.3 FULL SCALE RANGE SETTING .....	13
<b>APPENDIX A .....</b>	<b>15</b>

---

## ***LIST OF FIGURES***

FIG. 1.1 – MOD. A 1732 – A 1832 (LEFT) AND MOD. A 1732B – A 1832B (RIGHT) FRONT PANEL.....	7
FIG. 3.1 – A) MOD. A1732 - A 1832 SIDE VIEW; B) MOD. A1732B - A 1832B TOP VIEW .....	14
FIG. A.1 – MOD. A1832 ECHANNEL INDIVIDUAL ENABLE .....	15

---

## ***LIST OF TABLES***

TABLE 1.1 - CHANNEL CHARACTERISTICS OF THE MOD. A 1732 / 1732B - A 1832 / 1832B HV BOARDS .....	6
TABLE 3.1 - FULL SCALE RANGE SETTINGS.....	14

---

# 1. Mod. A 1732 - A 1832 HV Boards

---

## 1.1 Functional description

The Mod. A 1732 – A 1832 are single width boards housing 12 H.V. channels with either positive (A 1732P – A 1832P) or negative (A 1732N – A 1832N) polarity.

28 channel double width versions (Mod. A 1732B – A 1832B) have either positive (A 1732BP – A 1832BP) or negative polarity (A 1732BN – A 1832BN).<sup>1</sup>

The Mod. A 1732 - A 1732B output channels have 6 kV / 1 mA full scale range (dip-switch selectable); the Mod. A 1832 - A 1832B output channels offer either 6 kV / 1 mA or 6 kV / 200  $\mu$ A full scale range (dip-switch selectable); 12 channel versions with individually enabled channels (Mod. A1832 E P/N) are available as well (see also APPENDIX A).

The boards are compatible with the CAEN Universal Multichannel Power Supply System (SYx527)

If the output voltage differs from the programmed value by more than 3% of voltage full scale range, the channel is signalled to be either in OVERVOLTAGE or UNDERVOLTAGE condition. Moreover, for each channel, a voltage protection limit SVMAX can be fixed via software with 1 V resolution and the output voltage can not be programmed beyond this value.

The HV RAMP-UP and RAMP-DOWN rates may be selected independently for each channel in the range 1÷ 500 V/s in 1 V/s steps.

The output current is monitored with 20 nA / 100 nA resolution depending on current range; if a channel tries to draw a current larger than its programmed limit it is signalled to be in OVERCURRENT condition; the SYX527 system detects this state as a fault and reacts according to the setting of the TRIP parameter<sup>2</sup>, namely:

1) TRIP=infinite (= 1000 s)

When the set output current value is reached the channel behaves like a constant current generator.

2) TRIP=finite (< 1000 s)

The output current keeps the set value only for programmed time interval and then is switched off.

The TRIP time (i.e. the maximum time an OVERCURRENT condition is allowed to last) can be programmed in 0.1 s steps.

The maximum output voltage (VMAX Hardware) can be fixed, through a potentiometer located on the front panel, at the same common value for all the board channels and this value can be read out via software.

The boards host also a temperature sensor located on the PCB near the HV channels: the temperature values measured by this sensor are used to signal Over Temperature condition on the SYX527.

The boards are provided with an "HV EN" input that disables the channels when it is not connected to ground.

---

<sup>1</sup> A 1732B – A 1832B are currently out of stock and no longer produced

<sup>2</sup> Refer to the SYx527 User's Manuals for details about the TRIP Handling.

## 1.2 Channel Characteristics Table

**Table 1.1 - Channel characteristics of the Mod. A 1732 / 1732B - A 1832 / 1832B HV Boards**

<b>Polarity:</b>	Positive / Negative depending on purchased version
<b>Output Voltage:</b>	0÷6 kV
<b>Max. Output Current:</b>	low range 200 $\mu$ A (Mod. A 1832 - A 1832B) high range 1 mA
<b>Voltage Set/Monitor Resolution:</b>	500 mV
<b>Current Set/Monitor Resolution:</b>	100 nA (Mod. A 1732 - A 1732B) 20 nA / 100 nA depending on current range (Mod. A 1832 – A 1832B)
<b>VMAX hardware:</b>	0÷6 kV common for all the board channels
<b>VMAX hardware accuracy:</b>	$\pm 2\%$
<b>VMAX software:</b>	0÷6 kV settable for each channel
<b>VMAX software resolution:</b>	1 V
<b>Ramp Down:</b>	1÷500 Volt/sec, 1 Volt/sec step
<b>Ramp Up:</b>	1÷500 Volt/sec, 1 Volt/sec step
<b>Voltage Ripple:</b> <sup>3</sup>	< 30 mV pp (Mod. A 1832 – A 1732) < 50 mV pp (Mod. A 1832B – A 1732B – A1832 E)
<b>Voltage Monitor vs. Output Voltage Accuracy:</b> <sup>4</sup>	$\pm 0.3\% \pm 1$ V
<b>Voltage Set vs. Voltage Monitor Accuracy:</b> <sup>2</sup>	$\pm 0.3\% \pm 0.5$ V
<b>Current Monitor vs. Output Current Accuracy:</b> <sup>2</sup>	$\pm 2\% \pm 0.5$ $\mu$ A (1 mA range) $\pm 2\% \pm 0.1$ $\mu$ A (200 $\mu$ A range, Mod. A 1832 - A 1832B)
<b>Current Set vs. Current Monitor Accuracy:</b> <sup>2</sup>	$\pm 2\% \pm 0.1$ $\mu$ A (1 mA range) $\pm 2\% \pm 0.02$ $\mu$ A (200 $\mu$ A range, Mod. A 1832 - A 1832B)
<b>Threshold temperature parameters (TMIN, TMAX):</b>	+5 ÷ +65 °C

<sup>3</sup> From 10 Hz to 15 MHz at full load

<sup>4</sup> From 10% to 90% of Full Scale Range



## 1.3 Front Panel

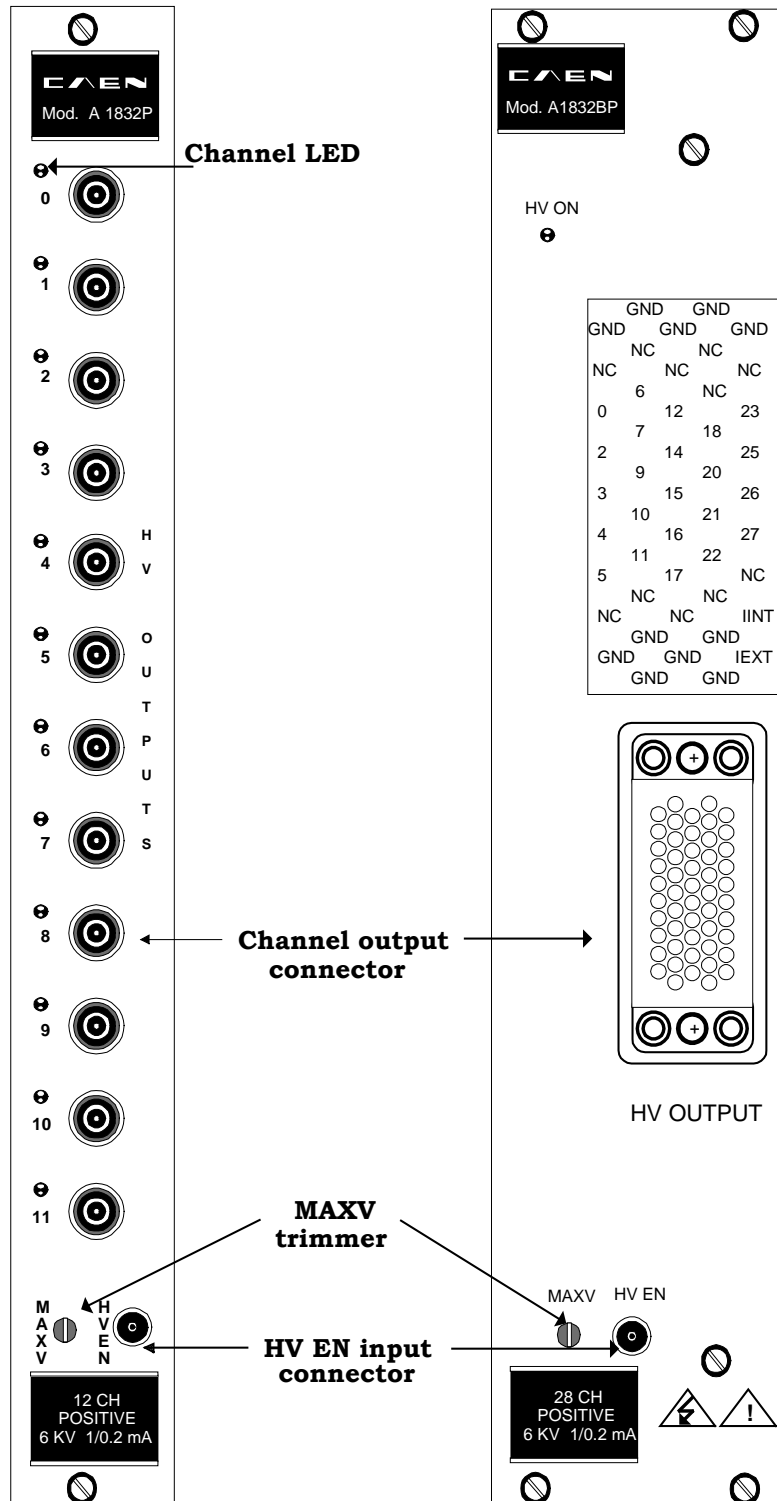


Fig. 1.1 – Mod. A1732 – A1832 (LEFT) and Mod. A1732B – A1832B (RIGHT) front panel

---

## 1.4 Technical Specifications

---

### 1.4.1 Packaging

The Mod. A 1732 – A 1832 modules are housed in a 5 TE-wide, 6U-high mechanics. The Mod. A 1732B – A 1832B modules are housed in a 10 TE-wide, 6U-high mechanics.

---

### 1.4.2 External connections

The location of all components of the front panel is shown in Fig. 2.1, p. 8. The function and electro-mechanical specifications of the external connectors are listed in the following subsections.

#### CH 0..11 (A 1732 – A1832):

##### Mechanical specifications:

HV coaxial connectors

Radiall SHVR317580-type

Electrical specifications: high voltage output according to specifications given in Table 1.1, p.6.

#### CH 0..27 (A 1732B – A 1832B):

##### Mechanical specifications:

Multipin connector Radiall 691803004-type,

52 pin male (to be mated with Radiall

691802002-type<sup>5</sup> [SCEM 09.41.34.700.2]) see Fig. 1.1 for pin assignment.

Electrical specifications: high voltage output according to specifications given in Table 1.1, p.6.

#### HV EN CONNECTOR

##### Mechanical specifications:

00-type LEMO connector.

Electrical specifications: board ENABLE input, if connected to ground, the channels are enabled. Refer to § 3.2, p.13 for further details.

---

### 1.4.3 Displays

#### CH ON 0..11 LEDs (A 1732 - A1832):

*Function:* they light up as the relevant channel is on.

---

<sup>5</sup> Requires 52 pins Radiall 691804300 [SCEM 09.41.33.830.7] type, to be installed using the insertion/extraction tool Radiall 282549024 [SCEM 34.95.17.125.3] type.

**HV ON LED (A 1732B - A1832B):**

*Type:* red LEDs for positive polarity version;  
yellow LEDs for negative polarity version

*Function:* it lights up if at least one output channel is on.

*Type:* red LED for positive polarity version;  
yellow LED for negative polarity version

---

#### **1.4.4 Other components**

**VMAX trimmer:**

*Function:* it allows to adjust the hardware maximum voltage VMAX common to all the channels. Its value can be read out via software.

---

## 2. Safety information and installation requirements

---

### 2.1 General safety information

This section contains the fundamental safety rules for the installation and operation of the boards. Read thoroughly this section before starting any procedure of installation or operation of the product.

---

#### 2.1.1 *Injury Precautions*

Review the following precautions to avoid injury and prevent damage to this product or any products connected to it. To avoid potential hazards, use the product only as specified. Only qualified personnel should perform service procedures.

**Avoid Electric Overload.**

To avoid electric shock or fire hazard, do not apply a voltage to a load that is outside the range specified for that load.

**Avoid Electric Shock.**

To avoid injury or loss of life, do not connect or disconnect cables while they are connected to a voltage source.

**Do Not Operate Without Covers.**

To avoid electric shock or fire hazard, do not operate this product with covers or panels removed.

**Do Not Operate in Wet/Damp Conditions.**

To avoid electric shock, do not operate this product in wet or damp conditions.

**Do Not Operate in an Explosive Atmosphere.**

To avoid injury or fire hazard, do not operate this product in an explosive atmosphere.

**Do Not Operate With Suspected Failures.**

If you suspect there is damage to this product, have it inspected by qualified service personnel.

---

## 2.2 Safety Terms and Symbols on the Product

These terms may appear on the product:

- **DANGER** indicates an injury hazard immediately accessible as you read the marking.
- **WARNING** indicates an injury hazard not immediately accessible as you read the marking.
- **CAUTION** indicates a hazard to property including the product.

The following symbols may appear on the product:



**DANGER**  
High Voltage



**ATTENTION**  
Refer to Manual

---

## 2.3 Installation

The Mod. A 1732 – A 1832 are single-width boards which can be inserted in any slot of the SYX527 crate. The Mod. A 1732B – A 1832B are double-width boards which occupy two SYX527 slots each. At power ON the SYX527 system processor will scan all the slots in the crate to find out where the module is plugged and what kind of module it is.

---

## 3. Operating modes

The Mod. A 1732 – A 1832 and A 1732B – A 1832B boards can be controlled, either locally or remotely, through the SYX527 software interface. For details on SYX527 system operation, please refer to the User's Manual of this product. The following sections contain a description of commands available for the board control and status monitoring.



### ATTENTION

**THE MOD. A 1732 and A 1832 BOARDS REQUIRE  
SYX527 FIRMWARE VERSION 1.09.04 OR LATER**

---

### 3.1 Output control and monitoring

For each output channel, it is possible, through the SYX527 system, to perform the following operations:

- Assign to channel a symbolic name
- Set output voltage (VSET)
- Set max. output current (ISET)
- Set output voltage software limit (SVMAX)
- Set voltage ramp-up speed (RAMP-UP)
- Set voltage ramp-down speed (RAMP-DOWN)
- Set TRIP parameter
- Enable/disable POWER ON option
- Switch channel ON/OFF
- Monitor output voltage (VMON)
- Monitor output current (IMON)
- Monitor channel status

If the POWER ON option is enabled, the channel, at POWER ON, is restored in the same condition it was before the POWER OFF or RESET; if this option is disabled, at POWER ON or after a RESET, the channel is kept OFF independently from its previous condition.

The following messages may be returned by the SYX527 when monitoring the channel status:

- OFF (channel turned OFF)
- RUP (channel ramping up)
- RDWN (channel ramping down)
- OVC (channel in OVERCURRENT condition)

- OVV (channel in OVERVOLTAGE condition)
- UNV (channel in UNDERVOLTAGE condition)
- EXTTRIP (channel OFF due to external TRIP line signal)
- INTTRIP (channel OFF due to internal OVERCURRENT condition)
- EXT\_DIS (channel disabled by board INTERLOCK protection)

Moreover it is possible to monitor board temperature and to check board status; the following messages may be returned by the SYX527 when monitoring the board status:

- UNDER\_TEMP (board temperature < 5°C )
- OVER\_TEMP (board temperature > 65°C)

---

## 3.2 Output Enable

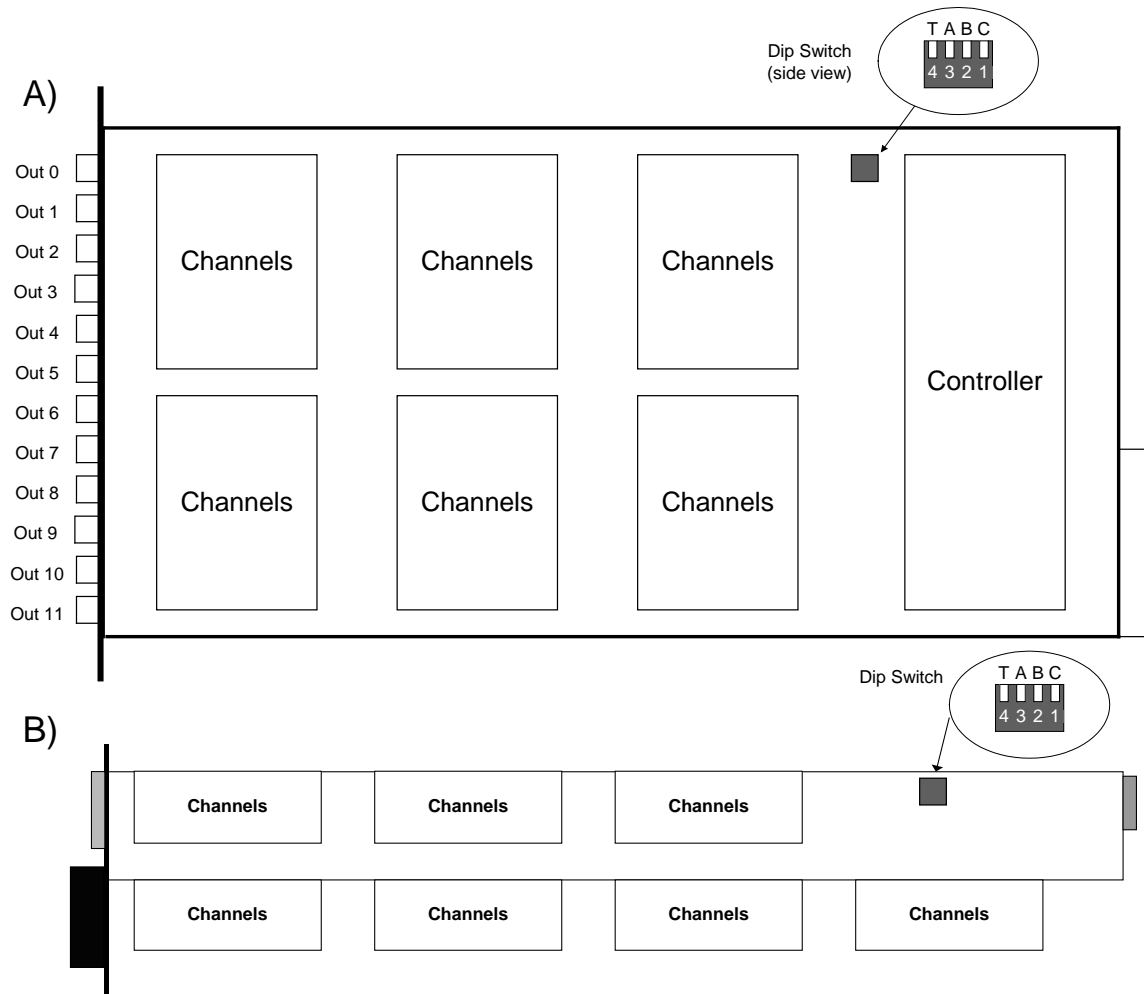
The boards are provided with an "HV EN" input that enables the channels when it is connected to ground.

When the channels are disabled the voltage outputs drop to zero at the maximum rate available; when the output disable cause is removed, i. e. the "HV EN" connector is connected to ground, the channels remain OFF until the User turns them ON via software.

---

## 3.3 Full scale range setting

The output voltage and current full scale range, common to all channels, can be selected by dip-switches (please refer to the Fig. 3.1 for the dip-switches location on the board).



**Fig. 3.1 – A) Mod. A1732 - A 1832 side view; B) Mod. A1732B - A 1832B top view**

In order to select the desired Full Scale Range (FSR) the dip-switches must be set as illustrated in the following table.

Dip-switch 1	Dip-switch 2	Voltage FSR	Current FSR
OFF	ON	6 kV	1 mA
OFF	OFF	6 kV	200 $\mu$ A

**Table 3.1 - Full scale range settings**

Full scale range selection must be performed before inserting the board into the crate.

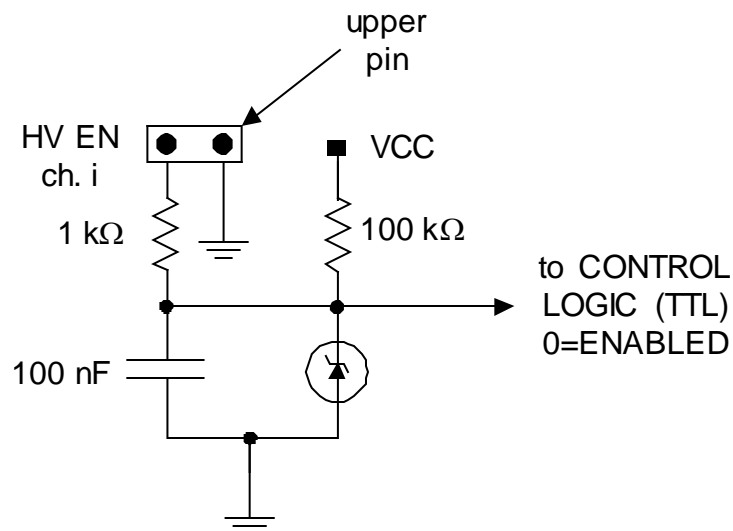


---

## APPENDIX A

### Notes for Mod. A1832 E

Each A1832 E channel is provided with an "HV EN" input (on the right side of the SHV connector) that disables the channel when the two pins are not shorted (jumper removed).



**Fig. A.1 – Mod. A1832 E channel individual enable**

When the channel is disabled, the voltage output (if ON) drops to zero at the maximum rate available. If the jumper is removed the channel remains OFF and any attempt to turn the channel ON will result unsuccessful.





**CAEN S.p.A.**

Via Vetraria 11  
55049 - Viareggio  
Italy  
Phone +39 0584 388 398  
Fax +39 0584 388 959  
info@caen.it  
[www.caen.it](http://www.caen.it)

**CAEN GmbH**

Brunnenweg 9  
64331 Weiterstadt  
Germany  
Tel. +49 (0)212 254 4077  
Mobile +49 (0)151 16 548 484  
info@caen-de.com  
[www.caen-de.com](http://www.caen-de.com)

**CAEN Technologies, Inc.**

1 Edgewater Street - Suite 101  
Staten Island, NY 10305  
USA  
Phone: +1 (718) 981-0401  
Fax: +1 (718) 556-9185  
info@caentechnologies.com  
[www.caentechnologies.com](http://www.caentechnologies.com)

**CAENspa INDIA Private Limited**

B205, BLDG42, B Wing,  
Azad Nagar Sangam CHS,  
Mhada Layout, Azad Nagar, Andheri (W)  
Mumbai, Mumbai City,  
Maharashtra, India, 400053  
info@caen-india.in  
[www.caen-india.in](http://www.caen-india.in)



Copyright © CAEN SpA. All rights reserved. Information in this publication supersedes all earlier versions. Specifications subject to change without notice.